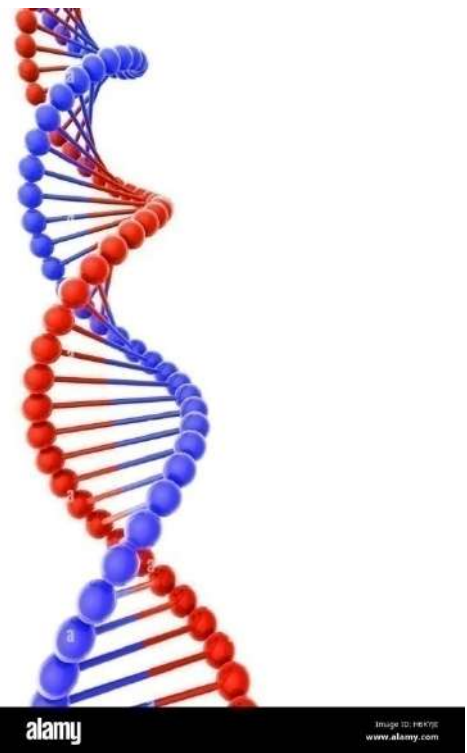


There is an unsolved problem in Physics and a big mystery in Nature and the structure of the Universe – That all the particles of matter in the Universe are spinning only in one direction – in an anti-clock way, which is called “left-hand spin”. This “Strange” phenomenon is not restricted only to the elementary particles, but it continues all the way up in the property of matter, structures of biological life, and celestial structures on a colossal scale.

Left-handedness we found in molecular structures, the structure of organisms, and even the DNA is a left-handed spiral. Many organisms are built on the base of the left-handed direction of their shells, such as sea cone shells, some flowers, or biological structures. Surprisingly for Astronomers even the planets and galaxies are spinning in an anti-clock way, - (when we are taking into consideration the direction of the local magnetic field of the Universe). There is no known physical mechanism or reason for this strange phenomenon, but we know that this universal preference for left-handedness cannot be accidental. - There must be a left-handedness reason on a fundamental level, which influences everything in the Universe to obtain left-handed orientation, but what it could be?



There is one unresolved puzzle that can lead us to the reason for the preferred spin in nature. – the fact that the hurricanes in the northern and Southern hemispheres are spinning in the opposite direction. Also the water vortexes in the draining sink of the North and South are spinning in the same directions. There must be a fundamental principle behind these spinning preferences of nature. There are some explanations for this phenomenon, but in general, our modern science has no clue. I am inserting the introductory part of a related article in “Scientific American” magazine - January 28, 2001

“Can somebody finally settle this question: Does water flowing down a drain spin in different directions depending on which hemisphere you're in? And if so, why?”



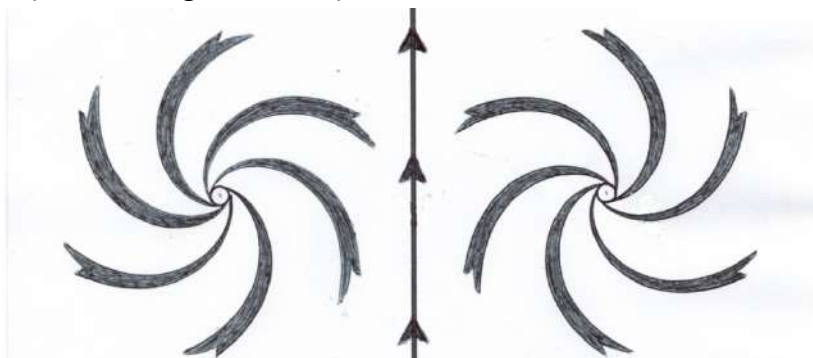
“This question would seem to be one of simple physics, and yet it continues to engender sharp disagreements. The main problem here is the division between theory and practice: whereas in principle the earth's rotation could affect the direction of draining water, in the real world that effect is probably swamped by other, less uniform influences”.

The complete answer to this “Puzzle” is not a straightforward formula, because there are involved a few different elements like the Earth's shape and rotation, its magnetic field, and the influence of the spatial orientation and the dynamic effect created.

Despite this, we can understand the basic principle of forces, which is creating this “Puzzle”.

On the graph below is visible the two vortexes with a different direction on the North and the South of the Equator. It seems to be that the direction of the Equatorial line movement creates a dragging effect on the air and water on both sides (Northern and Southern). Facing the Equator from a Northern and Southern point of view the Equator is running in the opposite direction for the “Observer”. As a result, we are observing that the vortexes of the higher and lower pressures **follow the rule of the “Right Hand Law” of electromagnetism**.

We know of the existence of the Earth's magnetic field. We know that air and water molecules are like miniature magnets. It is obvious that such “polarization” and directional movement of masses on the two sides in an Isolated Physical System is inevitable when there is a magnetic field and a uniform one-directional force propagating through this System. For the Northern and the Southern hemispheres, this force is running in an opposite direction! (See the diagram below)

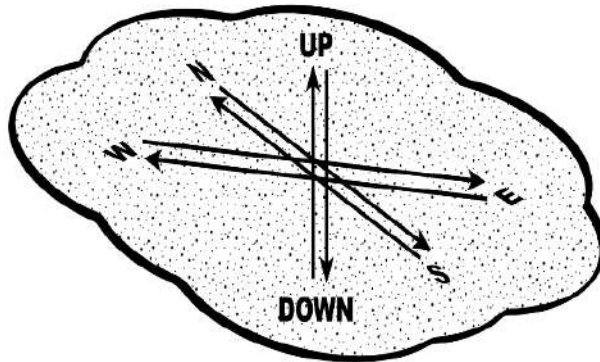


In the case of the Universe, we have to realize the similarity - that matter is just a form of condensed electromagnetic forces and is not electromagnetically neutral. The Universe has a gigantic electromagnetic field... **and there is a powerful one-directional fundamental force going through the Universe** – it is the **Time Dimension**... but what the actual physical mechanism for this phenomenon is?

So far, when we were applying the fundamental principles of the “Theory of Everything in Physics and The

Universe” we were able to solve most of the problems in Physics and Astronomy. - Let's see if the fundamental principles of “TOE” will be able again to solve this current mystery?

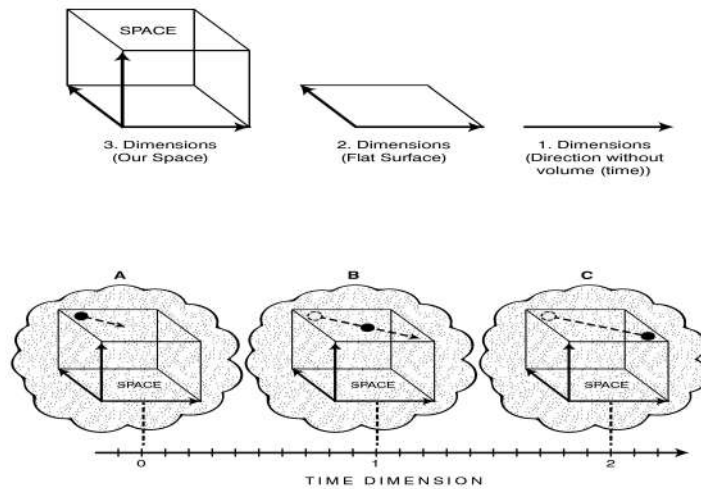
From “TOE” we know that the particles of matter in the atomic structures are separating from each other by their specific property called “Spin”. This “Spin” has two components – directional momentum (orientation) and rotational spin. This rotational “Spin” is called “helicity” or “chirality” - which is an ancient word for handedness. I have to state, in order to be able to explain the phenomenon of handedness I have to present the particles as spinning balls which is not the exact description of the physical property of the elementary particles but is close enough. From the book – “Theory of Everything in Physics and The Universe” we learned that **The Universe is constructed on the base of opposing forces and opposing symmetry**. The question is why there is no symmetry on the spin of particles and all particles of the Universe have “Left-handed spin”?



In this diagram is visible that each spatial dimension has an opposing dimension and each opposing pair is canceling its active dynamic momentum. As a result, Space is well balanced neutral Physical Medium, which cannot have a preference for the spin of the particles

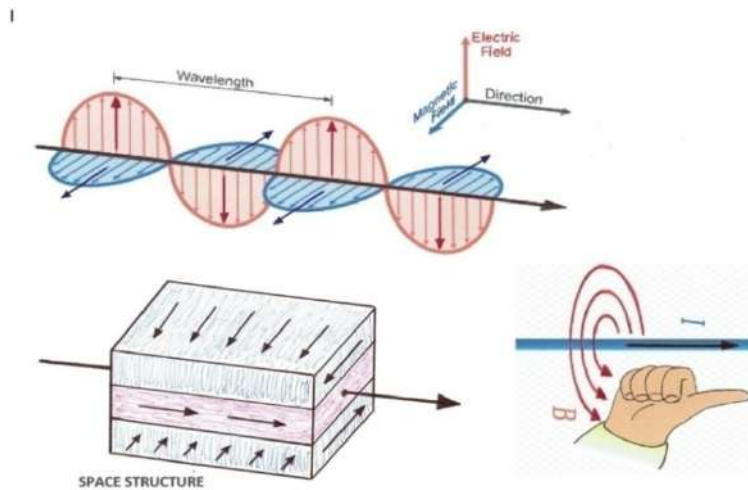
We know that Space is a neutral medium because the six spatial dimensions are canceling each other their spatial orientations...but there still is one active dimension in the Universe – “**Time**” which has no opposing pair to neutralize its directional dynamic momentum.

We are filling the one-directional propagation of Time and we are measuring its speed with our clocks, but we still have no idea about the spatial orientation of the Time dimension. – Why such vital knowledge is neglected? In TOE I have explained how Time is providing the irreversibility of the physical processes in the Universe. - (See the diagram below)

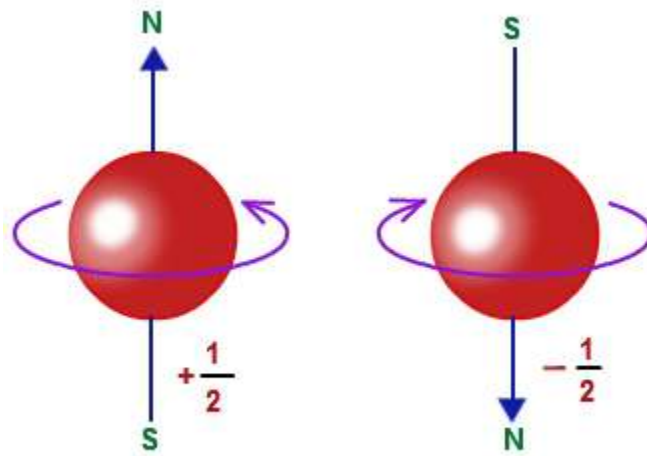


This is how Space is moving in the Time dimension. The black particle in (frame “C”) cannot go back to its original position, because its original position is in frame “A” which is not available anymore.

Space is a neutral medium inserted into the Time dimension. Time is an active element and the one-directional orientation of Time inevitably will influence the physical property of particles. In my book “Theory of Everything in Physics and The Universe,” I have explained how the orientation of spatial dimensions is influencing and orienting the magnetic field passing through an electric field. In the diagram below you can see how the passing electricity in the middle (red dimension) is producing a magnetic field that is oriented in the direction of the neighboring (blue) dimensions in an anti-clock way also! - (the right-hand Law). - (See the diagram below)



From the atomic structure, we have learned that the spin of the elementary particles must be aligned with the spatial orientation of the micro-dimension where the particles are situated. When Electrons pass through a magnetic field their directional orientation can be oriented **UP** or **Down**, but their spin (rotation around the axis) always will remain in the same (anti-clock) direction. (See the diagram below)



TOE explains that the position of particles is a crossing point of Spatial dimensions and Time. On the diagram, we see that there are two directional orientations of electrons – (the orientation of its axis), which is aligned with the (vertical) housing spatial micro-dimension, and the direction of its spin, which is influenced by the left-handedness of Time direction - (anti-clock way of rotation).

Our Universe is left-handed because the Time dimension is left-handed and its active momentum is influencing the spin of everything in the Universe!

Confirmation of this conclusion is the fact that antimatter always is right-handed. This fact is leading to the realization that antimatter exists in Anti-time, which has an opposite direction to our Time.

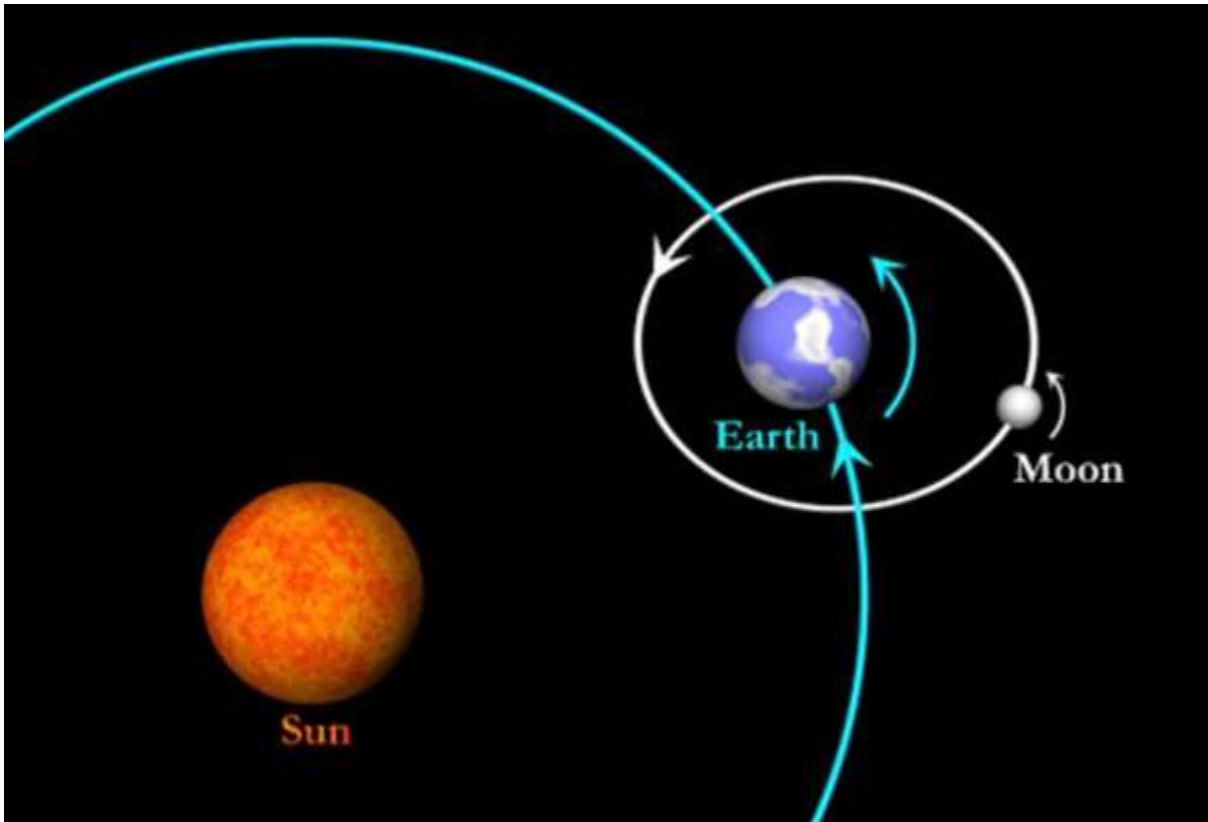
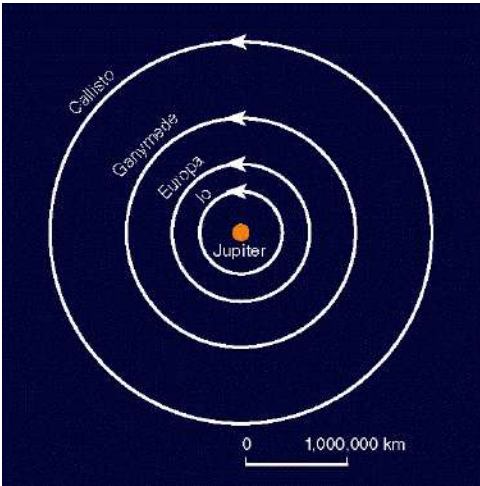
This is the easy and simple explanation of this proclaimed by our academic science as a “Big Mystery of the Universe”. It is obvious that when we have a correct understanding of the fundamental elements of the Universe everything is easy to be explained and there are no Mysteries!

Actually, there still remains one small puzzle! - We know that the antineutrinos are right-handed and they are not annihilated with the neutrinos. - We know that all other antiparticles are right-handed and they are annihilating in contact with matter. Is this can be regarded as an anomaly or something we don't understand? Right-handed particles should be situated in “Negative Time”... and this exactly represents the mystery - because Time and “Anti-Time” aren't supposed to co-exist in the same space and (at the same “Time”).

There still is no clear – why the small fractions of “Negative Time” that the anti-particles carry with them are not annihilating with Time. Can a small fraction of Anti-Time co-exist in our Universe without annihilating with our “Positive Time”? Probably, but science first must come back to reality. I have no available experimental data to be able to find out what will happen when the “Negative Time” comes in contact with Time. – (Annihilation and freezing of Time?...or more likely total destruction of everything in it.)

One thing is clear! – There must be a parallel Universe, where Time is running toward the Future, but their Future is in the opposite direction of ours. In this Parallel Universe, all structures are made by Antimatter and all particles are spinning in a clockwise direction! - This is a mirror Universe whose existence is necessary to balance the Total Universal Energy to “Zero”... but don't expect to find there your mirror image! –

These are two totally different Worlds. Unfortunately, the Parallel Universe is inaccessible to us, but our Universe is enormous and we have enough universe to explore. It is good to know that each of us is a unique individual, which for good or bad won't be repeated again in the Eternal History of both Universes!





Valentin Malinov

Imperial Colledge London:

Scientists had previously suggested that if right-handed quarks were participating in the decay as well, this might indicate that other forces are at work in the universe, besides the four – gravity, electromagnetism, weak and strong nuclear – described in the Standard Model. Investigation of these other forces could yield important clues about dark matter.

This study is important because it shows that any new fundamental force with a right-handed component is not involved in the decay – a setback for physicists searching for these new forces.

Dr Greig Cowan, an LHCb physicist from Edinburgh University and co-author on the paper, said: “Our results show a clear left-handed bias, which pulls us away from this line of inquiry and indicates that we need to look elsewhere to answer these fundamental questions about the universe.”

The 'handedness' of the universe is, in combination with differences between matter and antimatter, fundamental for how our universe evolved -

Professor Ulrik Egede

Department of Physics, Imperial College London